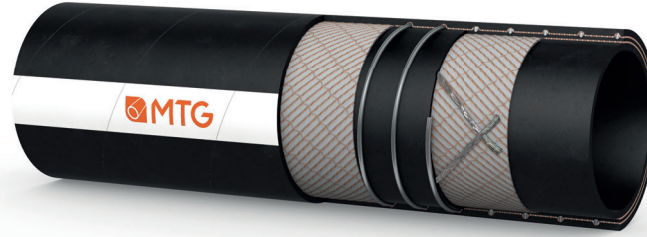




**MANIFATTURA TUBI GOMMA S.p.A.**  
 Grisignano di Zocco, 36040 (VI) ITALY  
 T. +39 0444.614755 | info@mtgspa.com  
 www.mtgspa.com



## APPLICATION

- Bunkering hose suitable for conveying mineral oils and/or fuels with an aromatic content up to 50%.
- The hose is used for loading and unloading storage tanks, oil tankers, barges and other heavy-duty services in oil refineries.

## CONSTRUCTION

### TUBE

- NBR rubber, black colour, antistatic ( $R < 10^6$  Ohm), smooth.

### REINFORCEMENT

- High strength plies of synthetic cord.
- Embedded steel helix wire.
- Built-in copper wires.

### COVER

- CR rubber, black colour, antistatic ( $R < 10^6$  Ohm), resistant to abrasion, ozone, sea water, weather and contact with fats and mineral oils, smooth, cloth finish.
- Self-extinguishing acc. to standard ASTM C 542.

## TEMPERATURE RANGE

- From -20°C to +82°C.

## SAFETY FACTOR

- $\geq 4$  times working pressure.

## STANDARDS

- In accordance with UNI EN 1765 (former BS 1435 Type S 15).

## FITTING

- The stem is applied by means of a special swaging system in order to ensure an excellent resistance to leaks and loosening.
- The type of couplings is to be agreed with our Technical Dept.

## NOTE

- This hose is only supplied in service lengths with couplings at the ends and electrically continuous between the two ends.
- If required, it is also available in an electrically discontinuous model: PETROLIERA/SPL/15-RP/A.

## MARKING

**MTG OIL TECH** MADE IN ITALY

## TECHNICAL SPECIFICATIONS

SIZE TOLERANCES: According to EN 1765:2004

Inner Diameter mm	Outer diameter mm	Wall thickness mm	Working pressure BAR	Burst pressure BAR	Vacuum BAR	Min. bending radius mm	Approx. weight kg/m (*)	Max. length m
50	69	9.50	15	60	-0.90	300	2.60	40
75	97	11.0	15	60	-0.90	450	4.80	40
100	128	14.0	15	60	-0.90	600	8.90	40
150	182	16.0	15	60	-0.90	900	13.50	20
200	250	25.0	15	60	-0.90	1400	32.10	20
250	318	34.0	15	60	-0.90	2000	46.90	12

(\*) The a.m. weight does not include the fittings.

Chemical resistance acc. to MTG Chemical Resistance Chart. Other sizes are available upon request.  
 Above technical data are based on application at room temperature (+20°C).